



The bronze process...

When developing a new sculpture, Vilona first creates sketches of the concept. Once the size and scale of the piece is engineered, the proper carving medium is chosen to begin the piece. He works closely with the foundry on the molding and patina development for each piece. The bronze process can take between twelve to eighteen months from initial concept to final gallery delivery.

Jim Vilona sculpts his smaller and medium sized pieces in microcrystalline artist wax. This type of wax works well for sculpting due to its versatility in the creative process. When heated, it is soft, pliable and can be worked by hand. When it cools, the wax hardens and can be carved into intricate details and patterns with the use of steel wax working tools.

Monumental and life-sized pieces require work in artists' oil clay. This medium remains soft and can be built up creating layers that will then be smoothed by hand, creating the piece by adding clay until the desired shape is realized. Steel tools refine the piece and add details and surface textures.

After casting, the patination is the final step in the bronze process. Each piece is cleaned and a surface texture may be added, and then heat is applied with chemicals to create the final patina coloration for each piece.

About the artist

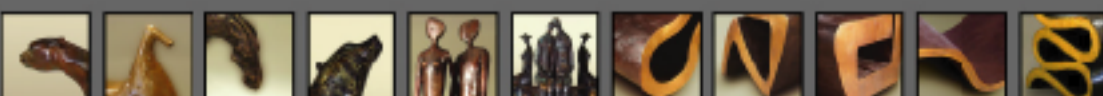


Born September 11, 1955 in Chicago, Illinois. Admitted to University of Colorado in 1975. Member of National Ski Team until 1979. Served a formal Sculpture and Gem Cutting Apprenticeship until 1983. Numerous exhibitions of sculpture and jewelry fabrication. Educational apprenticeship in Africa, Italy and Bali

"My palette has been influenced by studying and reflecting on the use of color by Cézanne and Matisse. I feel that this has brightened my work, and brought a feeling of space through my use of color that has become the building blocks for new patina techniques."

"My early decorative period has evolved into a more emotive approach, creating intimacy in my current work. It has been a sort of hierarchy of all my thoughts, working in the hope of finding an ultimate method."

JAMES VILONA
SCULPTURE





Current work...

Jim Vilona's education and training as a sculptor has been influenced by his extensive travels to such exotic places as Thailand, Bali, Brazil and Amazon as well as Europe and Central Africa. Natural inspirations and philosophical reflections combining his travels and relationships have inspired Jim, and he seeks to blend them into each of his pieces of sculpture. He has spent a great portion of his life training horses, and his horse sculpture communicates his deep affection for the beauty and grace of the animal.

Through his continuing studies in gemstone and mineral sculpture over the last 28 years, Jim has developed a keen eye for detail and understands what emotive elements occur through the balancing of color with form and content. Creating smaller scale sculpture or monumental pieces, Jim's process of design and artistic interpretation draws from similar principles. Jim's fascination with color as a vehicle to communicate artistically has brought him collaborative engagements with monumental artists in France and Italy.

Utilizing precious metals or silicon bronze, Jim's ultimate desire is to evoke emotion and inspire communication and appreciation. He currently is working with The Public Seating Project in designing bronze artistic sculpture that will enhance public spaces and inspire communication between artist and the observer.



The Public Seating Project
Art In Utility



What about The Public Seating Project...

The Public Seating Project (PSP) is a privately sponsored organization whose mission lies in making art more accessible to the public. It is the goal of the PSP that publicly placed works of art, both interactive and functional, will encourage the public's enjoyment of art through incorporating artistic works into their daily lives.



Public Seating Project

Vilona has a studio in Florida and the foundry in Bali. His Studios are filled with fine art, reference books and photographs that he has taken during his travel for research. Artistic shapes and design potential can be found in nature everywhere, and this creates inspiration for Jim at many levels.

"Being in the moment, in the present," is a key ingredient in Jim's communication style, and his energy and enthusiasm can be seen while observing his work. He seeks to engage the observer, creating energy and excitement through his purposeful use of form and color. Jim believes color has a unique way of drawing in the casual observer creating communication between artist and viewer beyond verbalization. His cutting edge patina work is continually being refined and developed and lends a signature style to his bronze work.

Jim takes great pride in his ability to hear client's intention while designing a commissioned piece, whether it is a furniture collection or a sculpture for corporate clients. Jim's bronze designs include private and corporate commissions.

Sculpture

